

Quick Installation Guide

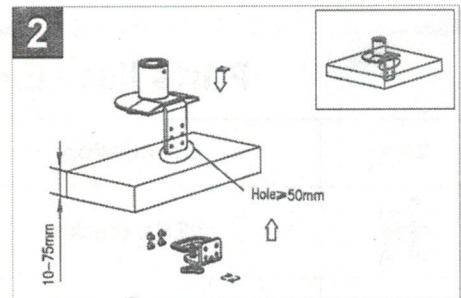
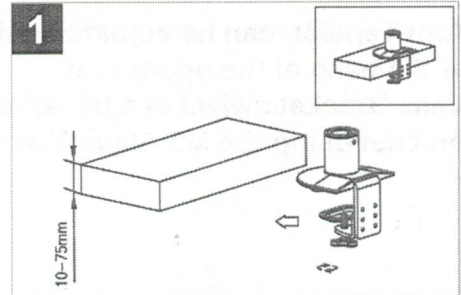
Flex Stand Installation - Executive Series Single Monitor Arm

Base Installation - Select Clamp or Grommet Base

Clamp Base

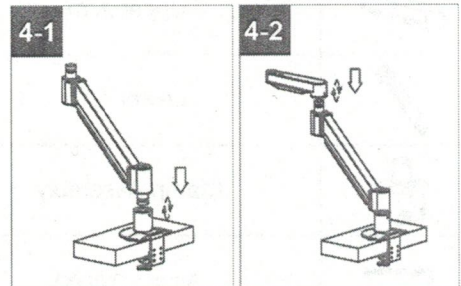
Step 1 - Fit Clamp over the edge of desk and tighten using provided Allen Wrench as shown in image #1.

Step 2 - Clamp base can also be fitted into the cable guide hole feature of some desks. To use this hole, fit the bottom half of the clamp through the hole then tighten as directed in step one. Alignment shown in image #2.



Arm Installation

Step 1 - Install lower arm, then upper arm units onto secured base as shown.

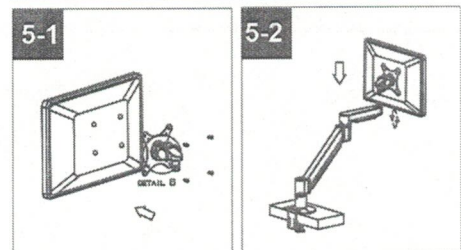


VESA Bracket/Monitor Installation

Step 1 - Lay monitor on flat level surface.

Step 2 - Using 4 monitor screws secure VESA bracket to back of monitor.

Step 3 - Install Bracket / Monitor into top section of Arm.



Cable Management

1. Monitor cables may be threaded through the upper and lower arms.
2. Cable guides snap off/on to allow placement of cables.

Note : An allowance of extra cable should be left to accommodate arm movement.

